

# msKanal

## WASTEWATER AND STORMWATER DRAWING AND DESIGN SOFTWARE

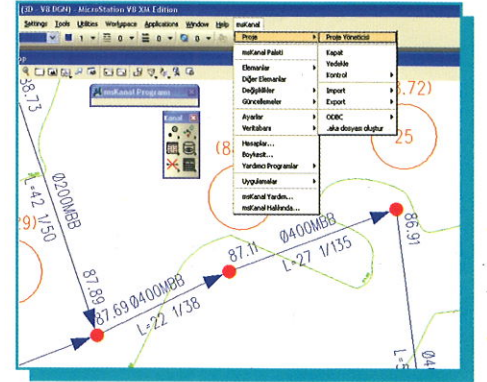
msKanal is a wastewater and stormwater drawing and design software, which is able to make hydraulic modelling, developed for municipalities, infrastructure utilities, civil and environmental engineers and foundations that has activities on GIS applications.

### MicroStation Support

Developed by the programming language of Microstation, MDL (Microstation Development Language), msKanal can make advanced element drawings, calculations and design, modifications and database processes in a fast and flexible way with the strength of Microstation on graphic and non-graphic media. This software runs on versions of Microstation V8, XM and 8i and can be upgraded for new versions.

### Strong Visual Planning

Both planning and design in the project can be easily made by the elements (manhole, pipe, catchment area, pump etc.) In this way, not only the draft structure but also the main skeleton of the system is established and data for calculation and design is prepared in a short time.



### Creating Elements

msKanal does not only place the elements, also creates needed data belonging to the elements into the database simultaneously.